

2017-2018

Off-Campus LIVING GUIDE

*A Buckeye's
guide to living
off campus*



THE OHIO STATE UNIVERSITY

OFFICE OF STUDENT LIFE
OFF-CAMPUS AND
COMMUTER STUDENT SERVICES



NEWER. BETTER. BEST VALUE!

NOW LEASING & CHECK OUT OUR BRAND NEW RESIDENT LIFE CENTER



Brand New Resident Life Center
with amazing amenities such as:

- Multi-Story Fitness Center
- Interactive Study Rooms
- Professional Tanning Beds
- Room to Lounge and Game
- Coffee Bisto Bar
- Cyber Lounge with
Computers and Printing

Fully furnished, brand new
one bedrooms available with
furniture included!

614-705-1769

UNIVERSITYVILLAGE.COM

2981 OLENTANGY RIVER ROAD
COLUMBUS, OH 43202

SERVING OSU STUDENTS FOR OVER 45 YEARS

SPECIALIZING IN 4 & 5 BEDROOM APARTMENTS
1-10 BEDROOM UNITS IN CAMPUS' MOST DESIRED LOCATIONS
GUIDED PROPERTY TOURS AVAILABLE
BEAUTIFULLY RENOVATED KITCHENS & BATHS



VIEW OUR LISTINGS & EARLY RENTAL OPTIONS AT
WWW.INNTOWNHOMES.COM

614.294.1684

2104 TULLER STREET

Table of Contents

01: INTRO TO OFF-CAMPUS LIFE

- 07 Welcome to Life Off Campus
- 08 Meet the Off-Campus and Commuter Student Services Team
- 10 Your Community Ambassadors
- 12 Save the Dates

02: FINDING OFF-CAMPUS HOUSING

- 15 The Search for Off-Campus Housing
- 18 Roommates 101
- 22 How to Inspect a Property
- 24 Understanding your Lease
- 25 Student Legal Services
- 30 Neighborhoods of Columbus

03: LIVING OFF-CAMPUS

- 33 Tips for Moving In
- 34 You're Moved in, Now What?
- 35 Rights and Responsibilities
- 36 Trash Talk
- 37 Moving Out

04: RESOURCES FOR YOUR SAFETY

- 42 Home Safety
- 43 Fire Safety
- 46 Bike Safety
- 47 Personal Safety
- 48 Party Smart
- 51 Buckeye for Life
- 53 Important Contact Information





LOCATIONS LIMITED

PROVIDING OSU STUDENT HOUSING FOR OVER 45 YEARS

Explore our apartments at OSULive.com

1-5 BEDROOM APARTMENTS AND HOUSES

PRICES FROM \$400-\$550 PER BEDROOM!

ONE BEDROOMS *Save \$100

59 E. Norwich Avenue FLAT
285 E 15th Avenue FLAT
24-26 W. 10th Avenue FLAT

TWO BEDROOMS *Save \$200

2547-2549 Neil Avenue DOUBLE
70 W. Northwood Avenue FLAT
2121 Iuka Avenue FLAT
167 E. 14th Avenue TOWNHOUSE
152 Chittenden Ave TOWNHOUSE

THREE BEDROOMS *Save \$300

32 W. Patterson Avenue FLAT
14-20 W. Norwich Ave TOWNHOUSE
2137 Waldeck Avenue HOUSE
227 E. 18th Avenue TOWNHOUSE
1524 Indianola Avenue DOUBLE

FOUR BEDROOMS *Save \$400

64 W. Northwood Ave TOWNHOUSE
136 E. Norwich Avenue HOUSE
2163 Indianola Avenue FLAT
2169 Indianola Avenue FLAT
1669-1675 Summit St TOWNHOUSE
39-51 Chittenden Avenue FLAT
64-70 Chittenden Ave TOWNHOUSE
81-93 Chittenden Avenue FLAT
50 E. 11th Avenue FLAT
87-93 W. 9th Avenue TOWNHOUSE
122-128 W. 9th Avenue TOWNHOUSE
86 W. 8th Avenue FLAT

5 BEDROOMS *Save \$500

220-222 E. Norwich Ave DOUBLE

LEASING FOR FALL 2018!

Rent Before Spring Break & Save \$100 per person off your first month's rent.*

Offer expires 3/13/18. Must mention this ad at lease signing to receive discount.

Our units have many features including Modern Kitchens, AC, WD Hookups, Decks & Fireplaces.

Stop by our office for more information or check our website at OSULive.com, where you may apply for a unit to let us know you are interested. We never charge application fees, IT'S FREE to look!

Some units available for immediate occupancy.

Contact our office to schedule a showing.

70 W Northwood Avenue #1E

Office located 2 blocks North of Lane Ave. Between Neil and High.

Open Mon-Fri 9am to 6pm

[Click Here to Call Now](#)

(614) 294-7067

SHOWINGS BY APPOINTMENT



Olentangy Village



- 1 Mile North Of OSU
- Swimming Pool
- On COTA Bus Line
- Fitness Center
- On-Site Grocery Store
- Free Parking
- On-Site Restaurants
- 24/7 Maintenance
- 有中文翻譯員

FREE
Application Fee &
Administration Fee

When you present
this coupon and make
your reservation.



614.261.0202

www.olentangyvillage.com

2907 N. High St. Columbus, OH 43202

OFFICE OF STUDENT LIFE

STUDENT HEALTH SERVICES



Student Health Services, located in the Wilce Student Health Center, is a Joint Commission Accredited outpatient facility.

Available Services for enrolled students:

Primary Care
Women's and Men's Health Services
Physical Therapy and Sports Medicine
Preventive Medicine, Immunization
and Vaccination
Dental Services
Optometry and Eyewear Gallery
Allergy Evaluation and Injection Therapy
Office Procedures
Travel Medicine
Nutrition

Support Services for enrolled students, faculty and staff:

Pharmacy
Laboratory
Radiology

Questions?

 shs.osu.edu

 614-292-4321



01

INTRO TO OFF-CAMPUS LIFE



Welcome to Life Off-Campus!

This Off-Campus Living Guide outlines the steps and resources to help you have an extraordinary off-campus living experience. Utilize this guide to answer your off-campus housing questions, learn about university and city resources and understand your rights and responsibilities as an off-campus resident.

Off-Campus and Commuter Student Services is The Ohio State University's resource center for off-campus living and commuting. Our mission is to serve off-campus and commuter students by collaborating with stakeholders and providing opportunities to foster involvement, civic engagement and student success to enhance the extraordinary student experience.

"Living off-campus can be fun and exciting. Enjoy discovering Columbus while becoming involved on and off-campus. And remember, no matter where you live, let Student Life be a part of your off-campus living experience!!"

Dilnavaz Cama
Department Manager
cama.1@osu.edu



WE WORK WITH

- All Students
- Permanent residents
- Local area landlords
- University and city officials
- Local municipal representatives
- Various community members

FIND US ON SOCIAL MEDIA



STOP BY OUR OFFICE

Off-Campus and Commuter Student Services
Ohio Union Suite 3106
1739 N. High Street
Columbus, OH 43210

Hours: Monday–Friday, 8 a.m.–5 p.m.
Summer Hours: Monday–Friday, 7:30 a.m. – 4:30 p.m.
Phone: 614-292-0100
offcampus@osu.edu | offcampus.osu.edu

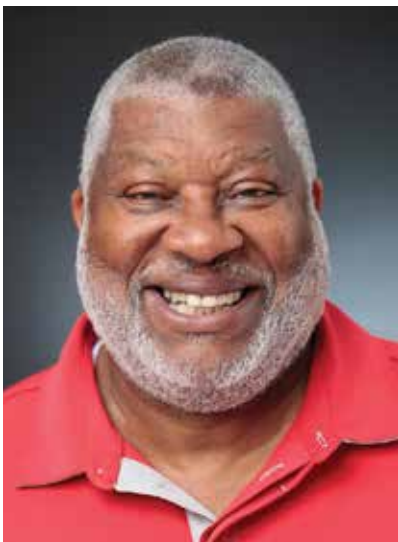
Meet the Off-Campus and Commuter Student Services Team!



Our team works relentlessly to ensure you practice safe habits and enjoy your student experience. From providing a variety of online resources - to providing free safety devices - to engaging students through peer led programs and mentoring first year commuter students, we are here to support you!

"Being part of the Off-Campus and Commuter Student Services team means that I am even more involved with commuter and off-campus students. It also makes me proud to be part of a department that has such a positive impact on students' college experience"

Aryell A.
Student Supervisor



MEET WILLIE

Senior Director **Willie Young**, can be found walking and driving the University District neighborhoods throughout the week and on the weekends, building positive relationships with off-campus students and offering advice on any safety concerns he may see along the way. An added bonus - if you're a trivia buff, Willie Young is your man! He loves challenging students with his vast array of trivia knowledge.

young.56@osu.edu



→ LOOKING FOR ROOMMATES OR HOUSING?
Check out pages 18-19

FIND US ON SOCIAL MEDIA



@OffCampus_OSU



@offcampus_osu



offcampusosu



OSUOffCampus



Life is better at the Peak.

HUNDREDS OF GREAT LOCATIONS NEAR OHIO STATE

STUDIO TO 8-BEDROOMS • COMPETITIVE PRICING • UPDATED AMENITIES • FRIENDLY SERVICE

PEAK PROPERTY GROUP

1646 N. HIGH STREET | 614.360.2020 | PEAKPROPERTYGROUP.COM

Your Community Ambassadors



Community Ambassadors are Ohio State students who live in the University District, directly interacting with residents to provide opportunities to foster involvement and civic engagement, enhancing the extraordinary student experience. Community Ambassadors can keep you informed about the University and the City, offering tips on how to stay safe, while providing opportunities to make a positive contribution to your neighborhood! Community Ambassadors are your peers that are here to support you for your many off-campus needs.

Sign up to receive the Off-Campus Monthly newsletter or check it out online at offcampus.osu.edu

Attend fun and informative monthly neighborhood events while engaging with your neighbors and friends!

Participate in University District wide events, such as the cornhole tournament and the Scarlet Sprint 5K. Have fun while also benefiting local organizations, such as the Buckeye Food Alliance, buckeyefoodalliance.org

Engage with your neighborhood Community Ambassador each week when they visit every residence on your street.



"Being a Community Ambassador has given me the opportunity to meet a variety of people in Ohio State's off-campus community. It has been a great way to connect with and educate my peers and neighbors on important topics that affect all of us. Having neighborhood events each month is a fun way to unite everyone together and meet new friends, especially when doughnuts are involved!"

Brooke L.
Community Ambassador

TO GET MORE INVOLVED WITH YOUR COMMUNITY, CONTACT:

Off-Campus and Commuter Student Services

Ohio Union Suite 3106
1739 N. High Street
Columbus, OH 43210

Hours: Monday–Friday, 8 a.m.–5 p.m.

Summer Hours:
Monday–Friday, 7:30 a.m. – 4:30 p.m.

Phone: 614-292-0100

offcampus@osu.edu | offcampus.osu.edu



THE OHIO STATE UNIVERSITY
OFFICE OF STUDENT LIFE

STAY CONNECTED

FOLLOW

Keep up-to-date on the happenings of Student Life.

SHARE

Retweet and regram our posts to let others know what is happening in Student Life, too.

CONNECT

Tag us in your posts so we can engage in your extraordinary experience!



@StudentLifeOSU

Office of Student Life calendar available at: studentlife.osu.edu/calendar



CREATING THE **EXTRAORDINARY** STUDENT **EXPERIENCE**

Save These Dates

Off-Campus and Commuter Students Services holds a number of events each semester. Check out some of these events and mark it on your calendar!

2017 CITY PARKING PERMIT SALES

AUGUST 16–18 / 21–23 | 10 a.m.–12:30 p.m.
1:30 p.m.–4 p.m. | OHIO UNION SUITE 3106
LIMITED TIME ONLY

You may be eligible to purchase a city parking permit. For more information, visit publicservice.columbus.gov.

What to bring:

- Vehicle registration
- Driver's license
- Proof of residency
- Check or credit card

ROOMMATE FAIR



FALL 2017: OCTOBER 20 AND DECEMBER 1
SPRING 2018: MARCH 2 AND APRIL 6
OHIO UNION SUITE 1000 | 5 – 6 p.m.

- Meet potential roommates **face-to-face**
- Light refreshments
- Resources for off-campus living

Note: Attendees are required to provide a student ID upon entry.

Visit offcampus.osu.edu for further information.



NEIGHBORHOOD EVENTS

AUTUMN AND SPRING SEMESTERS

Attend fun and informative events in the University District hosted by your Community Ambassador, such as:

- Cookouts
- Sustainability events
- Raffles

Visit offcampus.osu.edu for details!



CORNHOLE TOURNAMENT

SPRING SEMESTER

Join fellow students in the annual Off-Campus Cornhole Tournament. Enjoy free food, meet your neighbors and play a variety of games to win some great prizes!



OFF-CAMPUS LIVING EXPO

NOVEMBER 3, 2017 | 11 a.m. – 5 p.m.
OHIO UNION PERFORMANCE HALL AND POTTER PLAZA

MARCH 27, 2018 | 9 a.m. – 4 p.m.
OHIO UNION GREAT HALL MEETING ROOM

Your one-stop-shop for off-campus living! This interactive event will help you learn what the off-campus community has to offer, as well as how to keep yourself and your community safe. Prizes are generously provided by sponsors and donors. Get more information from:

- Landlords
- Businesses
- Various Ohio State departments
- Student Legal Services
- Safety Resources
- Fellow Student Leaders

"The Off-Campus Living Expo is a great event that brings so many landlords together in one place. My roommates and I were able to get a ton of our questions answered and even learned a lot of safety tips."

Ayaka V.

Off-Campus Resident



SCARLET SPRINT 5K

SEPTEMBER 24

The Scarlet Sprint brings together favorite Student Life Departments and other communities around Columbus, all while having the spirit of being a healthy Buckeye.

PLEASE VISIT

offcampus.osu.edu for more information about these events



02

FINDING OFF-CAMPUS HOUSING



The Search for Off-Campus Housing



An online housing search containing thousands of rental listings, along with landlord contact information, is available at offcampus.osu.edu - your resource for everything off campus! Please keep in mind, landlords and/or properties displayed on this online housing search are not University approved or endorsed.

TOP CONSIDERATIONS FOR OFF-CAMPUS HOUSING:

01 AFFORDABILITY AND UTILITIES

A necessary first step when selecting your off-campus housing is determining if you can afford the cost of living. To determine the affordability of a rental unit, you will need to consider the following:

- Rent
- Utilities
- Renters insurance (a must!)
- Books / parking / food
- Other living expenses (toiletries, clothes, supplies, etc.)

02 PROPERTY LOCATION

You should never live where you feel unsafe simply to save money.

- Visit the property during the day, at night and on the weekend
- Talk to the current tenants as well as your friends who are living in the area, and find out what their experience has been with the landlord and/or the area
- Check out crime statistics communitycrimemap.com

→ MAKE SURE TO CONTACT LANDLORDS MORE THAN 24-HOURS IN ADVANCE if you want to view potential rental properties, because landlords are required by Ohio Landlord Tenant Law to provide current tenants 24-hours' notice prior to entry. Most landlords who own rental property in the University District will not have a model unit that they can show at the spur of the moment.

→ DO NOT put all the utility bills under one person's name in case a roommate does not consistently pay his/her share of the bills.

→ PAYING UTILITIES ON TIME is an excellent way to build your credit score!

→ DID YOU KNOW? There are free apps that help divide the cost of bills amongst roommates.

"Not being from Columbus, I can definitely say that it is not hard to fall in love with this city! Places like the Short North, Downtown Columbus, German Village, and Easton offer a multiplicity of things to do, places to eat and memories to make and is within reach for anyone living in the University District. Once you start to explore everything Columbus has to offer, you'll realize that there is so much to do here!"

Tim C.
Off-Campus Resident





03 LANDLORD REPUTATION

The Undergraduate Student Government publishes an annual **Renter's Guide** (found at offcampus.osu.edu) which contains a compilation of ratings from students renting from local landlords. Talk to the current tenants and ask questions such as:

- Was the place **ready to move in** at the start of the lease term?
- Does the landlord make repairs in a **timely fashion**?
- Does the landlord provide **24-hours notice** prior to entering the premises?
- Is the landlord **respectful and easy to work with**?
- Would you **rent again** from this landlord?

Does the landlord participate in the **Off-Campus Housing Excellence Program**?

(for more information on this program, see page 29)



"Off-Campus and Commuter Student Services made my housing search so much easier! I was able to narrow down my search results on the website (offcampus.osu.edu) to find the perfect match. I could also clearly see where all of the properties were on the map provided in the housing search, and how to contact the landlords I was interested in."

Maddie C.

On-Campus Resident



04 RENTERS INSURANCE

Protect your belongings from fire, flood and theft by purchasing student renters insurance. Remember, your landlord's insurance policy does not cover your personal belongings.

05 SUBLEASING

Need someone to take over your lease?

- Advertise your property on the Off-Campus Housing Search (once you've made sure your landlord permits subleases)
- Keep in mind, you may still be responsible for the rent and/or potential property damage
- To understand more about subleasing, talk to Student Legal Services

→ **SUBLEASING** is a great way to find housing over the summer or for a semester!



Sublet (v.)

A vacant apartment or house where a renter has already signed a lease and is now trying to rent to another individual.

Privately owned and managed by George Kanellopoulos for over **25 YEARS!**

TOP RATED LANDLORD

TOP RATED for **13 STRAIGHT YEARS** by the *OSU Undergraduate Student Government Renter's Guide*.

MAX RATING of "six buckeyes" on **EVERY UNIT** through the new *OSU Off-Campus Housing Excellence Program*.



GORGEOUS and **UPDATED** 1 to 13 bedroom units offered in the **MOST DESIRED** locations!

"We strongly believe that if a property is not great enough for any of our children to live in, it's not fit for any student."

- The **SAFETY** of our tenants is of **PARAMOUNT** importance to us.
- **ALL UNITS** have **INTERCONNECTED** smoke detectors in **EVERY BEDROOM** and a carbon monoxide detector on **EVERY FLOOR**.
- **ALL UNITS** have **ELECTRONIC KEYPAD LOCKS** on exterior doors and **KEYED LOCKS** on individual rooms.
- **ALL UNITS** have an easily accessible fire extinguisher that is properly tagged and inspected on **EVERY FLOOR**.
- Full-time, well-qualified, well-paid, trustworthy, and courteous maintenance crew.
- We will **NEVER** enter your apartment without a **24-HOUR NOTICE** unless for an emergency.
- **RENT INCLUDES ALL UTILITIES** (gas, electric, water / sewer, cable TV and **HIGH-SPEED INTERNET - 110 Mbps**).
- **CONVENIENT** and **FREE** online rent payment.
- **GUARANTEED** response to general maintenance requests **WITHIN 24 HOURS**.
- **GUARANTEED** full satisfaction with move-in condition of all properties.
- **GUARANTEED** well-lit, off-street **PARKING**. We **NEVER** sell more parking permits than we have spaces.

Roommates 101

Finding a compatible roommate is important, so take as much time and care in choosing your roommate(s) as you do in choosing where you live. Below are a list of resources and tips to keep in mind throughout your search:

→ LOOKING FOR ANOTHER WAY TO FIND POTENTIAL ROOMMATES? Check out the Roommate Fair dates on page 12.

01 ONLINE ROOMMATE SEARCH

Off-Campus and Commuter Student Services offers a secure, central platform to assist the Ohio State community in their off-campus roommate search. You may post and/or browse roommate ads at offcampus.osu.edu.



02 ROOMMATE FAIRS

Are you looking for a roommate? Do you need to find someone to replace you and live with your current roommates? Check out our Roommate Fairs, held twice every semester. Roommate Fairs allow you the opportunity to meet potential roommates face-to-face in a safe and fun environment. An added bonus, get free safety devices at the Roommate Fair. The dates/times for the Roommate Fairs can be found at offcampus.osu.edu

03 BUDGET

Discussing financial expectations prior to signing a lease is crucial. Implement a monthly budget and stick to it! Make sure to create a roommate agreement specifying who is paying what. Student Legal Services has a document already created for you at studentlegal.osu.edu/offcampus. Also, be sure to schedule a one-on-one financial coaching appointment through Student Life's Student Wellness Center at go.osu.edu/yourfinances.

"Your living environment, including your roommates, directly affects your student experience ranging from your academics, engagement, satisfaction and post-graduation success."

Javaune Adams-Gaston, PhD,
Senior Vice President for Student Life



→ REMEMBER friends are not always the best roommates.

04 BE ON THE SAME PAGE

→ MOST OFF-CAMPUS LEASES ARE 11 1/2 MONTHS

Make sure you and your roommate(s) are aware of one another's plans and that you are all in agreement on items such as:

- Will your roommate(s) be responsible for paying a **share** of the **utilities**, even if they are not residing in the property?
- If your roommate(s) wants to **find a replacement** for their room and the landlord permits this, is everyone comfortable with the arrangement?
- Will your current roommate(s) have a say in **selecting the new/temporary roommate**?



→ VISIT studentlegal.osu.edu/offcampus for a Roommate Agreement template

05 DEALING WITH ROOMMATE CONFLICT

You can't predict everything in life, but you can certainly plan for the future. Determine a plan of action if/when you and your roommates run into conflict. Will you hold a house meeting? Will you utilize a voting system?

Utilize the free mediation service offered through Student Life to help resolve conflicts and disagreements. For more information, visit studentconduct.osu.edu/for-students/student-mediation-program/



IDENTIFYING ROOMMATE SCAMS

Use caution when you create ads online. Sometimes scammers may try to contact you about your ad in an attempt to steal your money and commit fraud.

HOW TO PROTECT YOURSELF

- Meet **face-to-face**
- Don't **wire funds** and avoid **cashier's checks**
- Check **individual references** including past landlords or employers via online search
- Ask for their phone number, full name, and employer verification
If they become **angry/hesitant**, it is most likely a scam
- Refuse **overpayment**
- Do not share your **personal information**

WARNING SIGNS

- Any time someone is trying to use money for roommate confirmation.
- The individual is not willing to provide basic identifying information.
- The individual asks you to handle the sublease without informing your landlord.

Joint and Several Liability Clause (n.)

A Landlord's ability to bring a lawsuit against any single tenant to pay rent or property damages, including the entire rent amount for the whole lease term, even if this individual was not the one to default on paying his/her rent.

Live It
LOVE IT!



THE
COMMONS
ON KINNEAR

COMMONSOSU.COM | 1150 KINNEAR RD. | COLUMBUS, OH 43212 | 614.486.4222

get all this and more
1, 2, 3 & 4 BEDROOM APARTMENTS AVAILABLE

- FULLY FURNISHED
- INDIVIDUAL LEASING
- ALL-INCLUSIVE RENT
- PRIVATE BEDROOM & BATHROOM
- WASHER & DRYER IN EACH UNIT
- COMMUNITY-WIDE WIFI
- 42" FLAT SCREEN TV IN EACH UNIT
- SPARKLING POOL & HOT TUB
- 24-HOUR FITNESS CENTER
- ROOFTOP BASKETBALL COURT
- COMPUTER LAB & STUDY CENTER
- CLUBHOUSE WITH POOL TABLE & FLAT SCREEN TVs



How to Inspect a Property



Before signing a lease thoroughly inspect the entire property. Below is a checklist to guide you with your inspection:

■ STEP 1

Turn on all faucets/ showerheads to make sure the hot/cold water works.

■ STEP 2

Confirm that there is at least **one smoke detector per floor**, especially in or near each bedroom.

■ STEP 3

Check the thermostat and make sure the heat and air conditioning work properly.

■ STEP 4

Make sure there is a sufficient amount of **outdoor lighting** for your safety.

■ STEP 5

Open windows to check the condition of their hardware and to make sure they are not painted shut. Bedroom windows should be large enough to escape through in case of a fire.

■ STEP 6

Inspect the walls, floors and carpet for **moisture damage or mold**.

■ STEP 7

Make sure all exterior doors have **functioning locks**.

■ STEP 8

Check all appliances to make certain they work.

■ STEP 9

Talk to the current tenants to see if they have had any problems or issues.

■ STEP 10

Check out offcampus.osu.edu to see if the property has had a **free safety home walk through** as part of Student Life's Off-Campus Housing Excellence Program. The assessment report produced can be very helpful as you decide what property you would like to rent.

NOTE:

If you see any issues and/or needed upgrades, discuss each item with the landlord. If they agree to your requests, be sure to put each item in writing in the lease.

After inspecting the property, if you and your roommates are still interested in renting the property, request a sample lease from the landlord. Take the sample lease to Student Legal Services where staff will provide you with a lease review.

TAKE TIME BEFORE YOU SIGN

Don't rush—take time and make an informed decision when selecting off-campus housing! Review the following considerations before signing a lease:

→ ROOMMATES

How well do you know your roommates and their habits?

Are your roommates financially responsible?

Communicate all expectations by creating a roommate agreement.

→ SAFETY

Does the landlord participate in the **Off-Campus Housing Excellence Program**, helping you to learn about the property's safety, security and sustainability?

Visit potential properties at **various times** throughout the day and night.

→ YOUR RIGHTS

Schedule a lease review with Student Legal Services at studentlegal.osu.edu.

→ YOUR BUDGET

Can you afford the rent?

Set money aside for a **security deposit**.

Visit the **Student Wellness Center** for financial counseling.

Account for **utilities, parking, renters insurance and furnishing** your rental unit.

→ LANDLORD REPUTATION

What do your peers say about their landlord based on **past experiences**?

Check out the USG Renter's Guide at offcampus.osu.edu to see how landlords are ranked by previous tenants.



Understanding Your Lease



Although not all landlords have the same policies, renting requirements in the Columbus area are typically consistent.

- Everyone on the lease may be asked to fill out an **application** which is usually associated with a \$30-\$75 fee per person. The landlord may also check your credit report at this time
- Most campus-area landlords **require a tenant under the age of 23 to have a co-signer**, often a parent/guardian
- Make sure all tenants and co-signers sign the lease and **submit it together at one time**
- Student Legal Services offers **free lease reviews** to students. This provides a great opportunity to learn everything about your lease. It is imperative that you understand a lease is a negotiable, yet legally binding contract
- Once all documents have been signed, make sure **each roommate keeps a copy**. Save your own copy; do not depend on a roommate to retain these important documents for you

HOW TO PROTECT YOUR SECURITY DEPOSIT

- Take pictures and videos** of the entire property prior to moving in furniture
- Document everything** from floor to ceiling
- Make a list of all repairs** in writing and keep a copy for your records

A security deposit is refundable within 30 days after your lease ends, as long as:

- You are **up-to-date on rent**
- The property is **returned in the same condition** as it was received
- You have provided a **forwarding address**



Security Deposit (n.)

A required, yet refundable, payment to a landlord in order to ensure that the rental property is not damaged and that all rent is paid during the lease term. A security deposit is typically equivalent to one month's rent.

Lease (n.)

A legally binding contract by which one party (typically a landlord) provides property to another (typically a tenant) for a specified term, in return for a periodic payment (usually monthly).

Student Legal Services

Student Legal Services (SLS) is a non-profit law office that provides legal advice, representation, education and resources to eligible Ohio State students. To schedule an appointment, visit studentlegal.osu.edu. If you are unsure if they will cover your legal issue, call 614-247-5853.

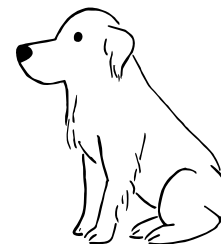
COMMON OFF-CAMPUS HOUSING ISSUES

- Lease review
- Condition of property
- Obtaining repairs
- Security deposit
- Roommate or neighbor disputes
- Lease termination
- Subleasing
- Breach of contract
- Pest and rodent problems
- Eviction

OTHER LEGAL ISSUES COVERED BY SLS

- Criminal misdemeanors
- Traffic offenses
- Consumer transactions
- Credit and/or debt collection defense
- Identity theft
- Simple wills, living wills and power of attorney
- Uncontested domestic matters
- Document review
- Document drafting
- Victims of crime assistance
- Notary and much more

If you want to have a pet, make sure your landlord allows it and that you have their written permission. Most landlords charge a nonrefundable deposit for pets, so ask for a copy of your landlord's pet policy and follow the rules.



"I would definitely recommend visiting Student Legal Services before you sign a lease. They helped my roommates and I understand confusing parts of the lease and were super friendly. The appointment didn't last too long and I was a lot more comfortable with understanding the lease after meeting with them!"

Brianna A.
Off-Campus Resident



**STOP BY
THE OFFICE**

Student Legal Services
20 E. 11th Avenue
614-247-5853

studentlegal@osu.edu
studentlegal.osu.edu

ANTHONY & KIMBERLY
Properties, LLC

2 to 9 Bedroom homes located in
the North University District.

Website: A-KProperties.com

Phone: (614) 784 - 8255

OSU Off-Campus Housing Excellence Program
Participant.

All of our homes received the highest accolades,
5 out of 5 Buckeyes and a green Buckeye.



THANK YOU

to our **2016 Off-Campus Living Expo Sponsors**



OFFICE OF STUDENT LIFE
OFF-CAMPUS AND
COMMUTER STUDENT SERVICES



LIVE AUTHENTIC. LIVE IN STYLE.
2-25 BEDROOM AVAILABLE FOR **FALL 2018**

PROPERTY LIST RENT STARTS AT \$400 PER PERSON

1-5 Persons

- 61-63 E Woodruff 4-5
- 75 Chittenden 4
- 50-52 Euclid 4-5
- 56 W Norwich 5
- 67 E 5th 1
- 71 E 5th 1
- 77-79 E 7th 1-5
- 235 E 11th 5
- 414-416 E Whittier 4
- 1181 Say 1
- 1514 Hamlet 4
- 1361-1400 Indianola 2-4
- 1369-1373 Summit 3
- 556 S Drexel 1
- 80-82 Euclid 4-5
- 2251-2253 Neil/Lane 4-5
- 2310-2312 High 4-5
- 1529 Summit 4-5
- 122 W Northwood 5
- 333-335 E 12th 3-5
- 222 E 11th 2-5
- 290 E Lane 1-5
- 78-80 W Norwich 4
- 104-106 W Northwood 4
- 108 W Northwood 4
- 167 E Norwich 4
- 84 E 9th/High 3-4
- 165 E Northwood Ave 3-4

- 180-182 W 8th 3-4
- 1712 Summit 3-4
- 45-45.5 Euclid 3
- 1394 1/2 Indianola 3
- 192 E 12th 2-4
- 320 E 17th 2-4
- 331 E 18th 2-4
- 350 E 12th 2-4
- 1548-1550 Hunter 2-4
- 140-142 E 11th 6
- 192-194 E 11th 2-3
- 186 E 11th 4-5
- 1635 Summit St 4
- 265 E 11th 4
- 225 E 11th 4-5
- 301 E 17th 5
- 1394 Indianola 3
- 1516-1518 Summit 3-5
- 291 E 14th 4
- 61-63 Woodruff 4-5
- 328 Chittenden 4-5
- 56 W Norwich 4-5
- 235 E, 11th 5
- 291 E 14th 5-7
- 122 W Northwood 5
- 140-142 E 11th 5
- 292 E 15th 1-2
- 86 E Lane 2-4
- 1444 N High 1-2
- 100 W 9th 1-2

6-7 Persons

- 78 E Woodruff 7
- 186 E Northwood 7
- 1993 Summit/19th 7
- 73 Chittenden 6
- 96 E Woodruff 6
- 225 E 11th 6
- 237 E 11th 6
- 52 E Woodruff 7
- 28 E 11th Ave 6-7
- 284 E 13th 6-7
- 286-288 E 16th 6-7
- 289 E 14th 6-7
- 328 E 17th 6-7
- 1656 Summit 6-7
- 1668 N 4th/13th 6-7
- 2143 Indiana/Lane 6-7
- 2215-2217 Neil/Lane 6-7
- 299-301 E 17th 5-7
- 149-151 Chittenden 4-7
- 72 E Woodruff 6
- 103-105 E Woodruff 6
- 308 E 14th 6
- 21 E Maynard/High 5-6
- 56 W Norwich 5-6
- 92-94 Frambes 5-6
- 109-111 E Woodruff 5-6
- 113-115 E Woodruff 5-6

- 116 W Northwood 5-6
- 130 W Northwood 5-6
- 194 E 12th 5-6
- 192-194 E 11th 3-6
- 1641 Indianola 5-6
- 286-288 E 16th 6-7
- 291 E 14th 4-6
- 1633-1635 Summit 4-6
- 328 Chittenden 5-6
- 1516-1518 Summit 5-6
- 1641 Indianola 6
- 2040 Tuller 7
- 98 E 18th 6-7
- 130 W Northwood 7-8
- 299-301 E 17th 5-7
- 1394 Indianola 6
- 86-88 Chittenden 7
- 1995 Waldeck 7
- 1510 Hamlet 6

8-9 Persons

- 222 E 16th 9
- 150 Frambes 9
- 405 E 15th 8
- 199 E 14th 8-9
- 179 E Lane 8-9
- 278 E 14th 8-9
- 278 E 15th 8-9
- 88 W Northwood 8
- 185 E Lane 8-9

- 187 E 12th 8
- 242 E 18th 8
- 408 E 15th 8
- 1888 Summit/17th 8
- 52 E Woodruff/Tuller 7-8
- 86-88 Chittenden 7-8
- 193 Frambes 8
- 130 W Northwood 7-8

10+ Persons

- 240 E 15th 18-24
- 38 E 17th 12-15
- 90 E 12th 14-16
- 43 E 15th 15-16
- 86 Chittenden 14-15
- 1846 Summit/16th 10-13
- 1965 Indianola/17th 10-12
- 1952 Iuka 15
- 1978 Iuka 21
- 58 E 12th 10-11
- 71 E 1 3th 10-11
- 1985 Waldeck/18th 10-11
- 135 E 14th 9-11
- 62 E Woodruff 9-10
- 119 E 13th 9-10
- 244 E 17th 9-10
- 195 E 14th 8-10
- 1957 Indianola/17th 9-10
- 80-82 Euclid 8-10
- 115 E 12th/Indianola 8-10

614.291.2600



**MAJORLY
EASY**



THE BEST WAY TO FURNISH YOUR OFF-CAMPUS APARTMENT.

\$119 /month*

THE NECESSITIES PACKAGE – Eat, Relax and Sleep.
Includes: Living Room, Dining Room and Bedroom

THE ACADEMIC PACKAGE – Focus on Your Studies.
Includes: Living Room, Study and Bedroom

\$239 /month*

THE ENTERTAINMENT PACKAGE – Balance Your Time at School.
Includes: Living Room, 32" LCD TV with Stand, Study, Dining Room and Bedroom

Split costs with your roommate
and save – add a bedroom for just

\$64 /month*

Rental Showroom & Clearance Center
8600 Sancus Boulevard
Columbus, OH 43240
614.985.7368

cort.com/student

*Pricing based on 12-month lease term. Sales tax, waiver and transportation fees not included. Package pricing subject to change without notice. Must show valid student ID.
©2016 CORT. A Berkshire Hathaway Company.

CORT

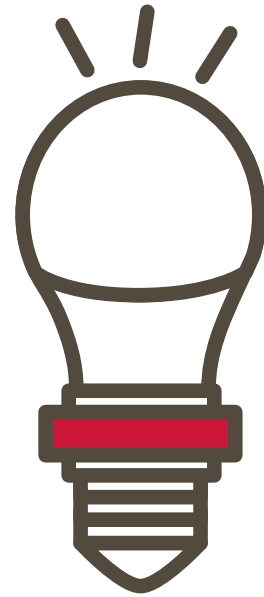
LIVE. WORK. CELEBRATE.™



SAFETY



SECURITY



SUSTAINABILITY



OFF-CAMPUS HOUSING EXCELLENCE PROGRAM

Schedule your free home safety walk-through at go.osu.edu/ochep



THE OHIO STATE UNIVERSITY

OFFICE OF STUDENT LIFE
OFF-CAMPUS AND
COMMUTER STUDENT SERVICES

Neighborhoods of Columbus

*shapes not to scale

Check out the map of some of the neighborhoods in Columbus including a few featured companies!

UNIVERSITY DISTRICT

SQUARE MILES: 2.83 | POPULATION: 43,996
 AVG. MALE AGE: 23.8 | AVG. FEMALE AGE: 23.1
 🕒 MINUTES TO CAMPUS: WALKING DISTANCE

Considered to be within walking distance to Ohio State's Columbus campus, the University District is comprised of multiple distinct neighborhoods directly surrounding the university. Undergraduate, graduate, and professional students as well as permanent residents live in this community. The University District contains apartment buildings, houses, townhomes and row houses. While the neighborhood is primarily residential, it is also home to popular restaurants and businesses.

Visit universitydistrict.org to discover more.

SHORT NORTH

SQUARE MILES: 0.194 | POPULATION: 1,629
 AVG. MALE AGE: 34.8 | AVG. FEMALE AGE: 29
 🕒 MINUTES TO CAMPUS: 6

The **Short North**, located south of Ohio State's Columbus campus, is an eclectic hub of art, dining, nightlife and fashion as well as boutiques and apartments. The Short North is also home to the North Market, featuring dozens of independent merchants and farmers. Whether you are heading out to explore Columbus in a large group, with family and friends or by yourself, the Short North has something for everyone.

Visit shortnorth.org to discover more.

VICTORIAN VILLAGE

SQUARE MILES: 0.497 | POPULATION: 6,374
 AVG. MALE AGE: 31.7 | AVG. FEMALE AGE: 28.9
 🕒 MINUTES TO CAMPUS: 6

Located south of Ohio State's Columbus campus, parts of **Victorian Village** are within walking distance to campus. It is comprised of older, large Victorian-style homes, along with apartment buildings and townhouses. There are a large population of Ohio State graduate students and young professionals in this community.

ITALIAN VILLAGE

SQUARE MILES: 0.464 | POPULATION: 3,565
 AVG. MALE AGE: 32.1 | AVG. FEMALE AGE: 28
 🕒 MINUTES TO CAMPUS: 4

Italian village is located southeast of Ohio State's Columbus campus. It is a designated historic district known for its historical and cultural preservation. The building types and architecture reflect Italian influence. With its parks and preserved historic homes, it is a popular home area for graduate students.



ARENA DISTRICT

SQUARE MILES: 0.264 | POPULATION: 767

AVG. MALE AGE: 34.2 | AVG. FEMALE AGE: 31.2

🕒 MINUTES TO CAMPUS: 7

Located downtown, southwest of Ohio State's Columbus campus, the **Arena District** is a fairly new urban area which is easily accessible by COTA. The Arena District is a trendy area, with newer apartment buildings located close to restaurants, shops and nightlife. Attractions that you can find in the arena district include multiple concert venues, parks, a baseball field and a movie theater.

Visit arenadistrict.com to discover more.

GERMAN VILLAGE

SQUARE MILES: 0.384 | POPULATION: 3,635

AVG. MALE AGE: 38.5 | AVG. FEMALE AGE: 40.9

🕒 MINUTES TO CAMPUS: 12

German Village is a historic neighborhood located next to the brewery district. It is a short drive south of the Ohio State's Columbus campus. German Village is home to many recent graduates and is an area with many historic restaurants, shops and nightlife venues.

CLINTONVILLE

SQUARE MILES: 5.423 | POPULATION: 33,112

AVG. MALE AGE: 39 | AVG. FEMALE AGE: 40.9

🕒 MINUTES TO CAMPUS: 13

Located just north of Ohio State's Columbus campus, **Clintonville** is home to many recent graduates and long-term residents. Whetstone Park, a Columbus landmark, is located in Clintonville just west of High Street and features a number of bike trails, tennis courts and baseball fields, as well as the Park of Roses. During the summer, there are a number of events held here, including the Rose Festival and a variety of concerts.

GRANDVIEW

SQUARE MILES: 1.386 | POPULATION: 6,481

AVG. MALE AGE: 35.3 | AVG. FEMALE AGE: 37

🕒 MINUTES TO CAMPUS: 9

Approximately a 5 – 10 minute drive west of Ohio State's Columbus campus, Grandview is home to many graduate students and young professionals. The area is a mix of residential properties and small businesses. Community events are held throughout the year, including the Grandview Hop.

Visit www.grandviewyard.com to discover more.

Neighborhoods of Columbus



NEIGHBORHOODS

UNIVERSITY DISTRICT

SHORT NORTH

VICTORIAN VILLAGE

ITALIAN VILLAGE

ARENA DISTRICT

GERMAN VILLAGE

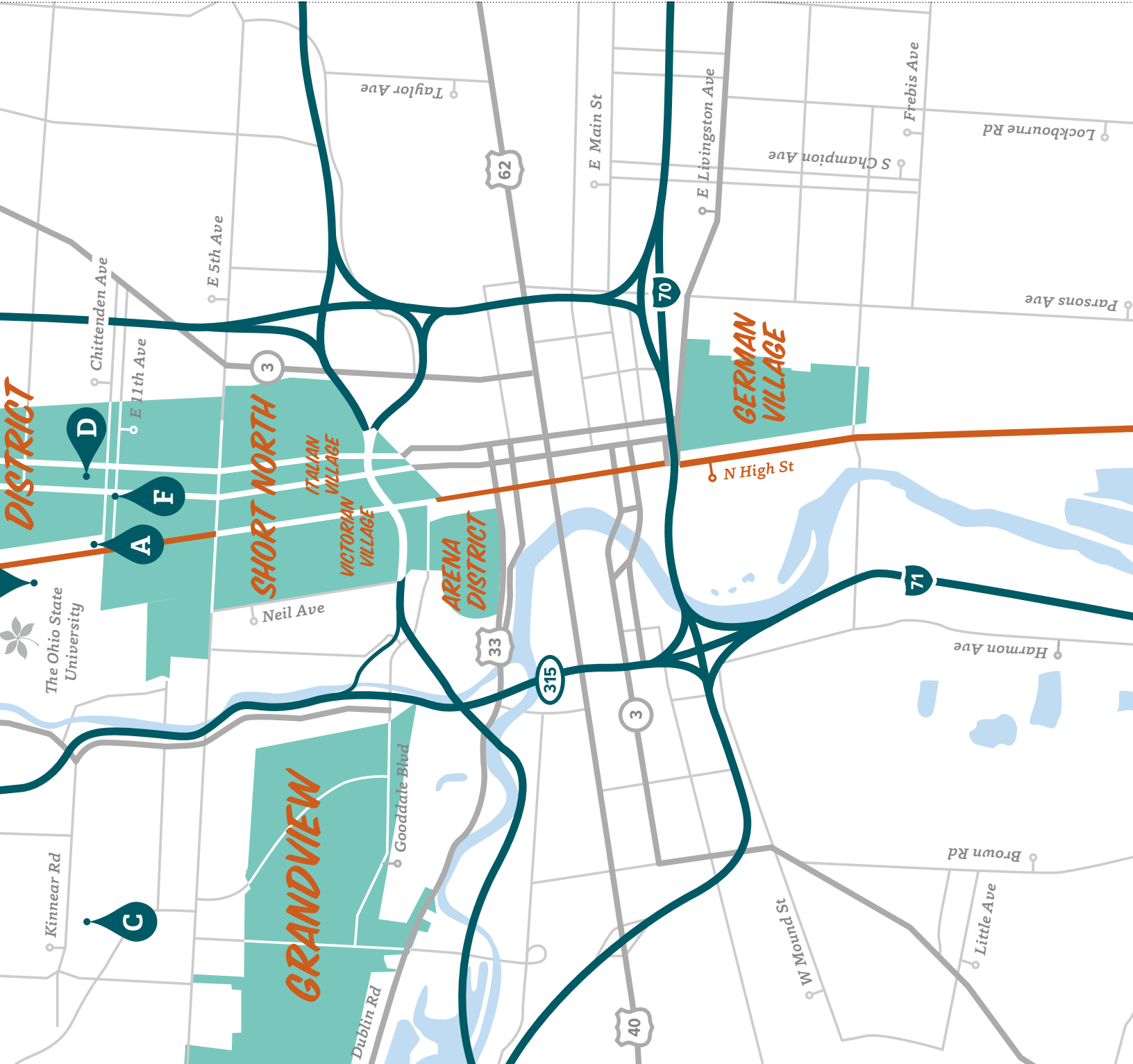
CLINTONVILLE

GRANDVIEW

BUSINESS

A PEAK PROPERTY GROUP

1646 N. High St.
614-360-2020



B. ANTHONY AND KIMBERLY PROPERTIES

413 Aldrich Rd.
614-784-8255
a-kproperties.com

C. T-H-E GRIFF

1234 Steelwood Road
844-674-7433
thegriffosu.com

D. LEGACY MANAGEMENT SERVICES

266 Chittenden Avenue
614-376-4278
lmscolumbus.com

E. OFF-CAMPUS AND COMMUTER STUDENT SERVICES

3106 Ohio Union
614-292-0100
offcampus.osu.edu

F. STUDENT LEGAL SERVICES

20 E 11th Ave
614-247-5853
studentlegal.osu.edu

03

LIVING OFF-CAMPUS

PLAN AHEAD if you don't want to end up with three tables and one chair. Clearly arrange which roommates are bringing which furniture on move-in day.

Tips for Moving Into Your New Home

Moving into an apartment/house can be a very exciting time, as you'll have a new place to live and a new sense of freedom, as well as a different set of responsibilities. Off-Campus and Commuter Student Services is here to help prepare you for your move.

01 SCHEDULE A DATE TO PICK UP YOUR KEYS

This is a great opportunity to ask your landlord to do a walkthrough before you move your furniture into the unit.

02 RESERVE A MOVING TRUCK

03 SET UP UTILITIES

(gas, electric, water/sewage, internet, etc.)

04 BUY RENTERS INSURANCE

Renters insurance, a must-have, is very inexpensive and offers many benefits. Make certain your policy takes effect the day you get your keys and move-in. Keep in mind, if you have car insurance, your insurance company may offer you a discount to bundle multiple insurance policies.

05 BUY PARKING PERMIT(S)

If you plan on parking on the Ohio State campus, you will need to purchase a campus parking permit through CampusParc, osu.campusparc.com.

If you plan on parking on an off-campus street, keep in mind that many streets require you to purchase a City Parking Permit, publicservice.columbus.gov

06 DO A FIRE SAFETY CHECK

Ask your landlord to provide the following:

- A **fire extinguisher** for each floor of the rental unit
- **Smoke and carbon monoxide detectors** for each floor and each bedroom.

07 SCHEDULE A SAFETY CHECK

Schedule a **FREE 30-minute** home safety walk-through by visiting go.osu.edu/ocheper and select the best time and date that works for you. Find out ways you can improve your safety and security and how to possibly save money on your utilities!

ADDED BONUS

If you sign up and/or refer a friend, you'll be entered into a raffle to win \$50 BuckID cash!

→ FREE SAFETY DEVICES

You've Moved In... Now What?

Living off-campus can be a fun and rewarding experience, especially when you are aware of your rights and responsibilities as a tenant, roommate, neighbor and community member.

DOCUMENT THE CONDITION OF THE PROPERTY

- Take video and pictures
- Fill out a move-in checklist (providing a copy to your landlord and retain a copy for your records)
- Notify your landlord, in writing, of any/all repairs that need to be made

ALWAYS PAY YOUR RENT ON TIME!

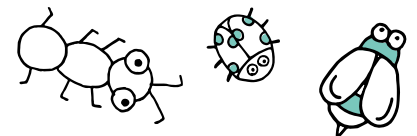
- If you are having issues with your landlord, do not withhold rent. Instead, contact Student Legal Services
- Pay your rent via check or credit card, rather than cash, so you have proof of payment

DON'T MAKE REPAIRS ON YOUR OWN!

- Your landlord is responsible for making repairs and keeping the rental property in a habitable condition
- You may contact your landlord to inform them of the needed repair, but always follow up in writing immediately - this is crucial
- Once notified, a landlord must make repairs in a reasonable amount of time, typically 30 days, unless it is an emergency situation
- Visit studentlegal.osu.edu/offcampus for a notice to repair template letter
- Visit go.osu.edu/ochep and select the best time and date that works for you. Get the safety of your house checked, find out ways you can improve your security and how to possibly save money on your utilities.

DON'T LET THE BED BUGS BITE!

- Bed bugs are real and can be a major problem
- If you suspect that you may have bed bugs (or that your neighbor may have bed bugs), contact your landlord and Student Legal Services immediately
- Professional extermination is the only way to effectively eliminate a bed bug infestation



→ IF YOU HAVE BED BUGS, do not use a bug bomb, boric acid or pesticides.

OFF-CAMPUS HOUSING EXCELLENCE PROGRAM



SAFETY



SECURITY



SUSTAINABILITY

Sign up and refer a friend
to win **\$50** BuckID cash.

Your Rights and Responsibilities

LANDLORD-TENANT LAW

Did you know there is a law in Ohio that regulates the relationship between landlords and tenants? This is known as **Ohio Landlord-Tenant Law**, and it sets forth the rights and responsibilities for both landlords and tenants.

LANDLORD OBLIGATIONS UNDER OHIO LANDLORD-TENANT LAW

- Comply with all applicable building, housing, health and **safety codes**
- Keep the property in a fit and **habitable condition**
- Keep all common areas **safe and sanitary**
- Maintain** all appliances and equipment
- Provide **24-hours' notice prior** to entering the unit (unless there is an emergency)

TENANT OBLIGATIONS UNDER OHIO LANDLORD-TENANT LAW

- Dispose of all garbage** in a clean, safe and sanitary manner
- Use **electrical and plumbing fixtures** properly
- Comply with **housing, health and safety codes** that apply to tenants
- Avoid **damaging** the property
- Do not disturb** your neighbor's peaceful enjoyment

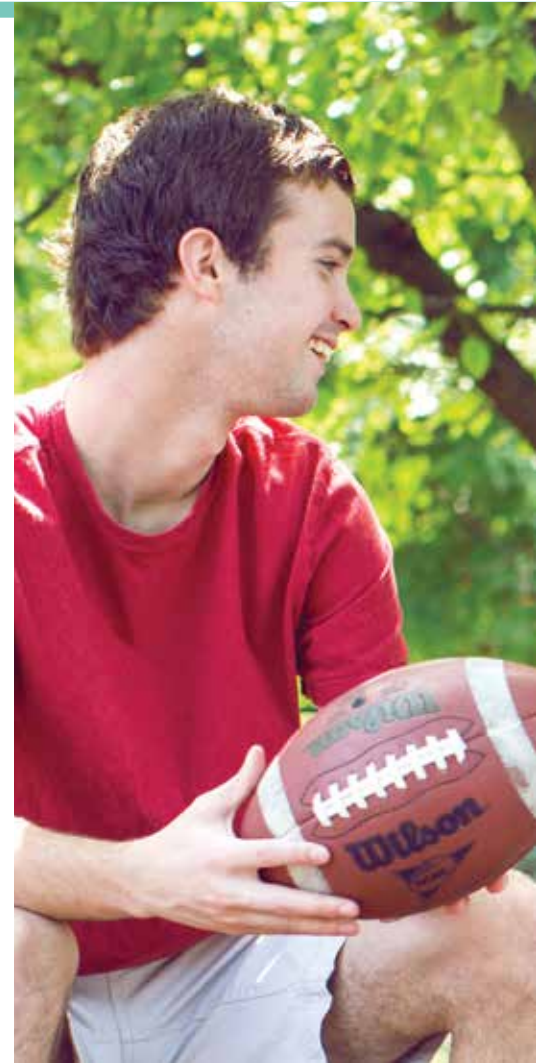
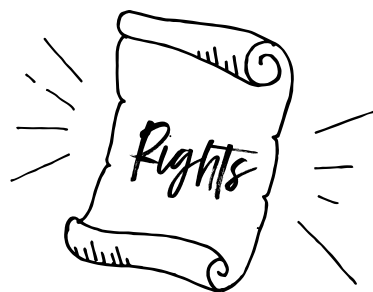
CODE OF STUDENT CONDUCT

It is a violation of The Ohio State University Code of Student Conduct to participate in off-campus behavior that causes substantial property damage or serious harm to the health/safety of members of the community, including but not limited to:

- Hosting an **out-of-control party**
- Setting **fires**
- Setting off **fireworks**
- Standing on **rocking cars**
- Throwing glass bottles or other **dangerous items**
- Rioting**

To view the full Code of Student Conduct, visit studentlife.osu.edu/csc.

It is illegal in the city of Columbus to have upholstered furniture on a porch, deck, yard or any outdoor location because it can quickly catch fire and block exits in the event of a fire.



Trash Talk

Trash is collected once a week and is managed by the City of Columbus Department of Public Service - Division of Refuse Collection. Call 3-1-1 or visit publicservice.columbus.gov/refuse to determine your designated trash-collection day.

Recyclables and yard waste are collected every other week. Call 3-1-1- or visit 311.columbus.gov/colorday

TRYING TO THROW AWAY AN ITEM THAT DOESN'T FIT IN YOUR TRASH BIN?

Schedule a **bulk item collection pick-up** on the My Columbus App or call the City's 311 Center. Bulk items, such as furniture, lamps, carpet and mattresses, are not collected unless the resident schedules a pick-up collection.

TO DONATE OLD FURNITURE, APPLIANCES, CLOTHING

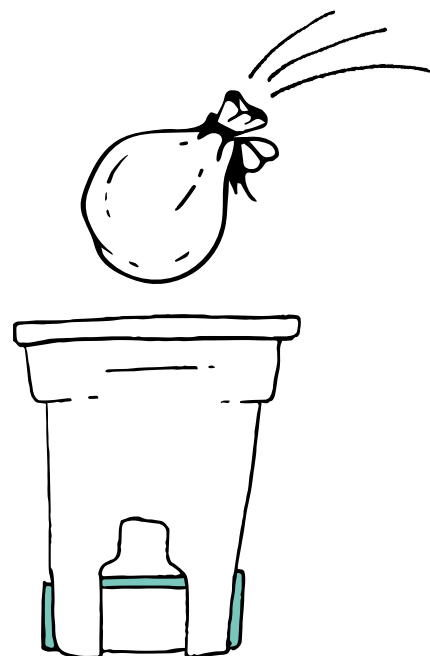
or other items in good condition, visit footprint.osu.edu/student-recycling/ to take part in Ohio State's Dump and Run or call Franklin County's FirstLink at 614-221-2255 to receive a list of organizations that accept donations.



TAKE THE PLEDGE TO BE GREEN AT COLUMBUSGREENSPOT.ORG

VISIT

publicservice.columbus.gov/refuse to look up your designated trash-collection day or call 311 if you do not know your designated collection point.



Moving Out

To have a smooth move-out experience, follow the tips below:



→ KEEP YOUR LOCAL ADDRESS UPDATED at buckeyelink.osu.edu and with the post office at usps.gov.

DOUBLE-CHECK YOUR LEASE FOR YOUR DEFINED MOVE-OUT NOTICE PERIOD

Notify the landlord prior to the deadline, in writing, of your intent to stay or to move out after the lease term. Student Legal Services can assist in drafting this letter to your landlord. **If you are planning to move-out, you must provide your landlord a forwarding address for your security deposit to be mailed.**

MAKE SURE YOU PAY YOUR LAST MONTH'S RENT

You cannot substitute your last month's rent with the already-paid security deposit.

CLEAN THE PROPERTY THOROUGHLY

A thorough cleaning job includes removing all tacks, nails and tape from the walls. It also includes replacing any light bulbs that are burned out.

DOCUMENT THE CONDITION OF THE PROPERTY

Once this has been completed—and, ideally, once you move your furniture out, complete a move-out checklist and take pictures/video (just like you did when you moved in) to show in what condition you left the property. You should also schedule a walk-through with the landlord, so that you can inspect the property together.

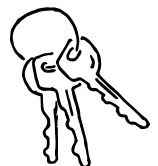
LEAVE YOUR CITY GARBAGE CONTAINER AND BLUE RECYCLING CART AT THE PROPERTY

Schedule a bulk trash pick-up if necessary for large items such as couches and mattresses. To do so use the My Columbus App or call the City of Columbus' 311 Call Center; **(614)-645-3111.**

CANCEL ALL OF YOUR UTILITY ACCOUNTS

Ensure that you call all of your utility companies directly to schedule a date to disconnect all your utilities. Remember your bills have to be paid in full before you are permitted to close your accounts.

RETURN ALL OF YOUR KEYS





Clip
n' Save

\$25 OFF

Any \$200 Purchase*

Not including book rentals
Coupon Expires 9-10-17.



Student Book Exchange
www.sbx-osu.com 614.291.9528
Cannot be combined with any other offers.

Clip n'
Save



STUDENT BOOK EXCHANGE
1806 N. High Street
www.sbx-osu.com
614.291.9528

BOOKS FOR RENT

RENT YOUR BOOKS AT SBX AND SAVE UP TO 55%





OHIO STATE UNIVERSITY'S FINEST ADDRESS
ACROSS FROM FISHER COLLEGE OF BUSINESS



FULLY FURNISHED | ALL UTILITIES PAID | DELUXE KITCHENS
STUDIOS, 1, 2, 3, 4, 5, AND 6 BEDROOM APARTMENTS




HARRISON
APARTMENTS

222 W. LANE AVE.
COLUMBUS, OH 43201

614.294.5551
WWW.HARRISONAPARTMENTS.COM

04

RESOURCES FOR YOUR SAFETY





Resources for Your Safety

Even though the Ohio State campus community is a relatively safe place, it is not crime-free. Because the university sits in a major urban community, it has the same safety concerns as any similar neighborhood. Though there is a lot we do for your safety, there is nothing more vital to **your safety than your own alertness and common sense.**

"The Off-Campus Housing Excellence Program free home walk through was easy to schedule online. I was provided a thorough assessment report, showing me how I could improve the safety in my home and even gave me ideas on how my landlord could help improve the security of my building."

Mason S.
Off-Campus Resident



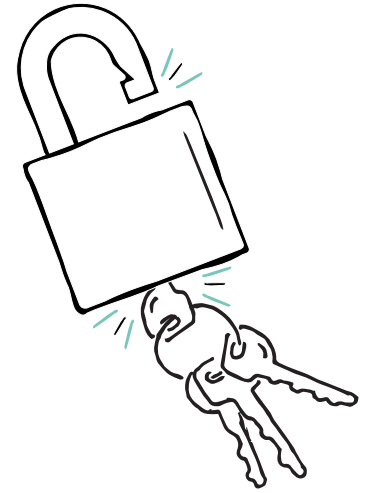
FREE HOME SAFETY DEVICES

OHIO UNION ROOM 3106

Window and Door Alarms, Safety Timers, Smoke Alarm Batteries

Home Safety

Introduce yourself to your neighbors and exchange contact information. By creating a close knit community, you can help inform each other of suspicious activity in your neighborhood. Also, encourage your street to display Buckeye Block Watch placards to signal to criminals that they are being watched.



LEAVING FOR BREAK?

- **Keep your heat at 65°F or above** to prevent your pipes from freezing and bursting
- **Contact the post office** to hold/forward your mail, holdmail.usps.com
- **Lock your doors and windows** and pick up free alarms in the Ohio Union Suite 3106
- **Secure your valuables**, including your TV
- **Use safety timers** to give the illusion of activity in your home. Stop by Ohio Union Suite 3106 for free safety timers
- **Disconnect electrical extensions**, even toasters
- **Ask a neighbor or friend** to keep an eye on your home
- **Don't post your vacation photos on social media** while you're on vacation; wait until you return, so people don't know when your house is vacant

GENERAL SAFETY TIPS

- **If you see something, say something**— call 911 for emergencies and 614-645-4545 for non-emergencies
- **Do not open your doors to strangers**— if you have scheduled a utility company appointment, ask for an ID or badge before allowing entry
- **Keep your doors and windows locked**— at all times, even when you are home
- **To report issues** such as graffiti, vandalism and street light problems, call the 311 Columbus Service Center at 614-645-3111

BUCKEYE BLOCK WATCH

Buckeye Block Watch unites residents of the University District to create a clean, safe and enjoyable living environment. You are the eyes, ears and voice of the Ohio State community, so if you see something, say something. To find out how to get involved in Buckeye Block Watch, go to offcampus.osu.edu/safety



→ **PICK UP FREE SAFETY DEVICES** and a Buckeye Block Watch placard in Ohio Union Suite 3106!



Fire Safety

Since January 2000, Campus Firewatch has documented that 87% of fatal campus fires occurred in off-campus areas across the nation.

COMMON FACTORS IN THE NATION'S CAMPUS FIRES

- **Missing or disabled** smoke alarms
- **Careless disposal** of smoking materials
- **Impaired judgment** from alcohol consumption
- **Upholstered furniture fires** on decks and porches

HOUSE FIRE PREVENTION

- If a fire breaks out, **get out and stay out**—call 911
- **Have at least one working smoke alarm and carbon monoxide detector** on each floor of your residence, preferably one in each sleeping area
- **Test alarms once per month,** and change batteries each semester



- **Always know two ways out,** especially from bedrooms
- **Keep items at least three feet** from heat sources, including your furnace

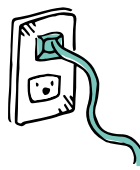


→ **DON'T GRILL ON A PORCH** or within 20 feet of a building

- **Don't store** gasoline or lighter fluid inside your residence
- **Keep a working fire extinguisher** near your kitchen and know how to use it
- **Make sure your extension cords or power strips are rated for the wattage of your products to be plugged in;** do not run them through walls, doorways, ceilings or floors; if a cord is covered, heat cannot escape, which leads to a fire hazard

→ **DON'T OVERLOAD ELECTRICAL OUTLETS!**

This was the cause of an Ohio State off-campus house fire in 2015.



UNATTENDED COOKING

is the **LEADING CAUSE** of residential fires.

75%
of **FIRE FATALITIES**

occurring in off-campus residences were attributed to disabled smoke alarms, alcohol consumption or lack of sprinklers.

CARELESS SMOKING

and discarding of cigarettes is the leading cause of **FIRE DEATHS.**



THE WELLINGTON

11 E. 17TH AVE.

Great location!
Directly across from The Wex

Target + other exciting retail underneath!

Individual leases

Washer/dryer in each unit

Private baths for each bedroom

State-of-the-art fitness center

High-speed internet & cable TV with HBO incl.

Stunning clubhouse with 2nd floor lounge

24-hour computer lab with copier/printer

Group & quiet study rooms

Movie theater!

fall 2018!



FISHER COMMONS

900 NETTLE DR.

- Quiet community
- Full kitchen
- Short walk to CABS stop
- 1 & 2 BR'S
- Group study area



NORWICH FLATS

250 W. NORWICH AVE.

- Fully furnished 1, 2, 3 & 4 BR's
- Individual leases
- On-site fitness
- 24 HR computer lab w/PC & printer
- Under building parking garage with direct building access available



THE DORIC ON LANE

150 LANE AVE.

- Adjacent to campus
- Fully furnished 1, 2, 3 & 4 BR's
- Individual leases
- Under building parking garage with direct building access available
- Outdoor lounge

OSU STUDENT LIVING
.com

FIND YOUR SPACE...

steps to campus from any angle!

Check out our website to find the community that best fits your needs!

THE HIGHLINE AT NINE

1494 S. HIGH ST.

Great location!
Adjacent to
Campus Gateway

Individual leases

Washer/dryer in
each unit

Private baths for
each bedroom

High-speed
internet & cable
TV with HBO incl.

Spectacular
clubhouse with
2nd floor lounge

24-hour computer
lab with copier/
printer

State-of-the-art
fitness center with
yoga studio

Group & quiet
study rooms

Short walk to
CABS &
COTA stops

*now
open!*

Exciting retail
underneath
including...

Chumley's



*Pool
with
sundeck!*

Bike Safety

Bicycle safety is especially important in a large urban city such as Columbus. In Ohio, bicyclists are required to follow the same rules of the road as motor vehicles. One-way streets, stop signs, riding on the right side of the road and yielding to pedestrians are some of the requirements for bicyclists.



“Buy a U-Lock! My bike was stolen the first week of my freshman year. If I had a U-lock, this may not have happened. You should also Bug Your Bike- help your bike find its way home by registering it for free with the city of Columbus at columbus.gov/BugYourBike”

Bailey C.
On-Campus Resident

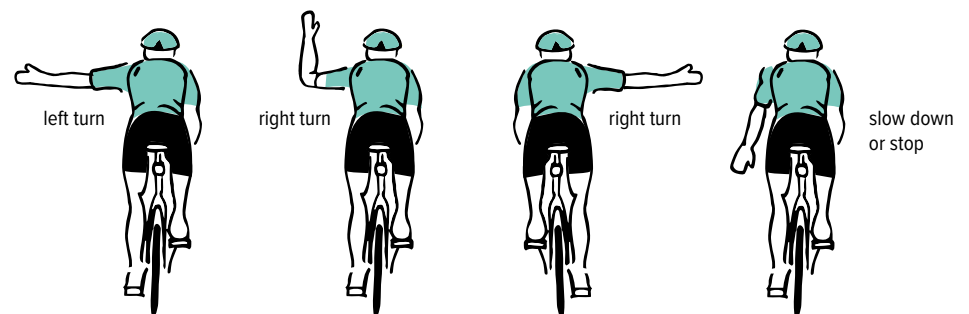
PREVENT CRIME

- **U or O-Shaped locks work best in deterring bicycle theft.** When parking, lock both rims and the frame to a bike rack for more security. Use only bike racks, not small trees or outside furniture and keep walkways and stairways unobstructed
- **When your bike is parked for an extended period,** occasionally move it to show you are keeping a watchful eye
- **Bug Your Bike!** Bicycle theft can be a problem for students. Use the latest technology to “Bug your Bike” with a FREE RFID (Radio Frequency Identification Device) as part of the Student Life Risk Assessment efforts to prevent theft. Bugs are available at University Security and Fire Prevention Services, 1010 Blankenship Hall
- **Register your bike;** this is a free service that takes only a few minutes out of your day. A registered bike that is lost or stolen is more likely to be found or returned. For more information or to register your bike, visit the Public Safety office in Blankenship Hall



BE A COMMUNICATIVE BICYCLIST

Let others on the road know your next move by using these hand signals:



Personal Safety

Although there are many resources and services available to help support your safety, it is up to you to take necessary precautions to stay safe.

KEEPING YOURSELF SAFE

Never walk alone at night. To enhance your own personal safety and security, follow these guidelines.

- Walk in **well-lit areas**
- Wear **light colored clothing** at night
- **Avoid alleys**
- Don't leave your **headphones or earbuds** in while walking
- Know where the emergency "**blue-light**" **telephones** are located
- Utilize Student Safety Service; request a **Safe Ride** by calling 614-292-3322
- Let someone know where you are going, your **expected arrival time and the route** you expect to take to reach your destination
- Utilize the free **LifeLine Response app**
- Register to receive public safety notices at go.osu.edu/safetynotice
- Be aware of your **surroundings**

TIPS:

- Never give out your personal or financial information to strangers.
- Never leave valuables in your car.



COMMUNITY CRIME PATROL

Community Crime Patrol (CCP) is a group of highly trained citizen patrollers working to increase safety in Columbus neighborhoods. For more information, visit communitycrimepatrol.org.

RAPE AGGRESSION DEFENSE

Rape Aggression Defense (R.A.D.) is a free self-defense class offered to women by The Ohio State University Police. For more information, visit dps.osu.edu/police/rad.

SEXUAL CIVILITY AND EMPOWERMENT TEAM

Student Life's **Sexual Civility and Empowerment Team** addresses situations of sexual violence, including sexual assault, stalking, intimate partner violence and sexual harassment. They offer prevention and education resources and programs throughout the Student Wellness Center and support services through the Student Advocacy Center. A Sexual Violence Assistance Fund is also available for survivors of sexual violence. For more information, visit sce.osu.edu.



Party Smart

As a host of a party, you can be held responsible for the actions of your guests. If you have guests who have been drinking and want to drive home, call them a cab or have them spend the night at your place—do not let them get behind the wheel. There are many ways to be spirited and enjoy a great party without behaving in disrespectful or irresponsible ways. As a responsible member of the Buckeye community, here are some tips on how to be safe and party smart: **#PARTYSMART**

BEFORE THE PARTY

- Check out partysmart.osu.edu for helpful tips
- Put up **orange fencing** to control the crowd from leaving your yard and spilling into the street. Do not let anyone consume alcohol outside the fence
- Talk to your neighbors **prior to the party**. Exchange phone numbers. Build a friendly relationship. If a friendship has been established, they are more likely to come to you first if any problems arise
- Limit** the amount of alcohol available. Providing more alcohol increases the likelihood of problems arising because it leads to larger crowds and more intoxicated people
- Do not let guests party on porches, roofs or overcrowded decks beyond capacity. **This is dangerous and illegal!**

DURING THE PARTY

- Check IDs** at the door
- Have at least one **sober host**
- Lock doors** to private areas, such as bedrooms and hide valuables because thefts occur during parties too
- Do not leave drinks **unattended**
- Provide **non-alcoholic** drinks for those who do not drink or who are under age 21
- Keep music/noise at a **reasonable level**

AFTER THE PARTY

- Keep Columbus beautiful and respect your neighborhood. Clean up all garbage, cups and cans immediately after the party





ALCOHOL, TOBACCO AND OTHER DRUGS

BASICS and **CASICS** are designed to assist students in examining their own behavior in a judgment-free environment. One-on-one assessments are available for alcohol (BASICS) and marijuana (CASICS) use. These programs are aimed at reducing risky behaviors and harmful consequences that may arise from alcohol and drug abuse. Visit swc.osu.edu for more information.

THE COLLEGIATE RECOVERY COMMUNITY

The Collegiate Recovery Community is a supportive community for students in recovery from drug and alcohol addiction. It offers specific programming to support students in their academic and recovery journey. The Recovery House at Penn Place is an on campus living option for students in the Collegiate Recovery Community. For more information on the Collegiate Recovery Community, visit go.osu.edu/recovery.

DID YOU KNOW?

It is illegal to possess an open container of an alcoholic beverage in some public areas. Conviction of this offense carries a maximum penalty of a \$150 fine. Consumption of alcohol in a motor vehicle is a fourth-degree misdemeanor with maximum penalties of 30 days imprisonment or a \$250 fine or both.

It is a violation of Ohio State's Code of Student Conduct to host an out-of-control party, meaning you could potentially face suspension or dismissal from Ohio State. Make sure you are in control of your party at all times. If you even suspect the party is getting out of hand, contact the police for assistance.

The charge of possession or manufacture of a fake ID or the alteration of or use of someone else's real ID is a first degree misdemeanor. The maximum penalties for this offense are six months imprisonment or a \$1,000 fine or both. Moreover, if the fake ID is utilized to purchase alcohol or enter an establishment that serves alcohol, the minimum fine must be at least \$250 and the person displaying the fake ID may have their valid identification suspended for three years.



Sonnenblick

APARTMENTS

*Victorian Village
Living at it's Finest!*



- Studios, 1, 2 & 3 Bedroom Gardens and 2 Bedroom Townhomes
- Minutes to OSU



Sonnenblick

APARTMENTS

730 Thurber Drive West / Columbus, OH 43215 / (614) 221-5921
www.myplacesonnenblick.com

Buckeye for Life

Off-Campus and Commuter Student Services believes in building strong relationships with our community members, including city and state constituents. This includes being heavily involved in community meetings, organizations and initiatives to ensure students and community partners are engaged and connected. Being a good neighbor and a responsible citizen are important aspects of being a Buckeye!



BE A GOOD NEIGHBOR

311 COLUMBUS CALL CENTER

The **City of Columbus Call Center** provides a way for you to submit requests for city services by calling 614-645-3111. The call center is the single point of contact for residents to request all non-emergency city services such as potholes or fallen trees, as well as scheduling bulk trash pick-up.

Check out 311.columbus.gov for more information.

CITY OF COLUMBUS APP

The City of Columbus also provides a **free mobile app**. The goal is to allow area residents enhanced access to city and community resources. The mobile app encompasses four main initiatives:

- My Neighborhood
- Get Active
- Get Green
- 311



"Ohio State has given me so many opportunities and I know it never would have been possible without the support of this community. There are so many ways to stay involved beyond graduation and it's certainly in the Buckeye spirit to pay it forward. I am looking forward to bettering the Buckeye community through community service and alumni club events, even if I'll be living across the country!"

Andrew W.
Alumnus

WHAT CIVIC RESPONSIBILITY INVOLVES

- Service opportunities
- See something, say something
- Picking up trash
- Recycling
- Donating old clothes/appliances
- Supporting others
- Being involved in your community

Civic Responsibility (n.)

The social responsibility of bettering our Buckeye community through active engagement.



THE FINEST CAMPUS HOUSING AT THE MOST AFFORDABLE PRICE



BEAUTIFUL STUDIO APARTMENTS - 10 BEDROOM HOMES

BUCKEYE STUDENT SPECIALS

BRING IN THIS COUPON FOR **\$100 OFF** YOUR SECURITY DEPOSIT PER BEDROOM*

\$25 EARLY RENTAL BONUS!



RENT BY DECEMBER 15TH AND GET A \$25 AMAZON.COM GIFT CARD PER BEDROOM**

*For each BR per unit rented for the 2018-2019 school year, receive \$100 off your security deposit. (i.e. \$100 off for 1BR, \$200 off for 2BR, etc.)

**For each BR per unit rented by 12/15/17, receive one \$25 amazon.com gift card. (i.e. \$25 for 1BR, \$50 for 2BR, etc.) Must present coupon to receive this limited time offer. Additional restrictions may apply.

University Manors, LTD. 72 E. 14th Ave. Columbus, OH 43201

www.UniversityManors.com

(614) 291-5001

MOST UNITS INCLUDE



FREE OFF-STREET PARKING



FREE LAUNDRY



SOME OR ALL UTILITIES



PROMPT MAINTENANCE SERVICE



UPDATED KITCHENS AND BATHS



PAY ONLINE INDIVIDUALLY

JOIN OUR WAIT LIST OR SCHEDULE A TOUR TODAY!

WWW.UNIVERSITYMANORS.COM

(614) 291-5001

Important Contact Information

STUDENT LIFE OFFICES AND SERVICES

Office of Student Life

614-292-9334

studentlife.osu.edu

Off-Campus and Commuter Student Services

614-292-0100

offcampus.osu.edu

BuckID

614-292-0400

buckid.osu.edu

Counseling and Consultation Service

614-292-5766

ccs.osu.edu

Student Advocacy Center

614-292-1111

advocacy.osu.edu

Student Mediation

614-292-0748

studentconduct.osu.edu

Student Wellness Center

614-292-4527

swc.osu.edu

Wilce Student Health Center

614-292-4321

shc.osu.edu

ADDITIONAL UNIVERSITY SERVICES

Campus Directory Assistance

614-292-6446

CampusParc

614-688-0000

osu.campusparc.com

Office of International Affairs

614-688-5482

oia.osu.edu

Student Legal Services

614-247-5853

studentlegal.osu.edu

Suicide Prevention Hotline

614-221-5445

suicidepreventionservices.org

Transportation and Traffic Management

614-292-RIDE

ttm.osu.edu

ADDITIONAL CITY SERVICES

311 Call Center

614-645-3111

311.columbus.gov

SAFETY AND EMERGENCY SERVICES

Columbus Division of Fire (non-emergency)

614-221-3132

columbus.gov/fire/

Columbus Police (non-emergency)

614-645-4545

columbuspolice.org

Community Crime Patrol and Neighborhood Policing Center

614-247-1760

communitycrimepatrol.org

Emergency

9-1-1

Ohio State Department of Public Safety

614-292-2121

dps.osu.edu

Ohio State Emergency Management

emergency.osu.edu

Ohio State Police (non-emergency)

614-292-2121

ps.ohio-state.edu/police/

Student Safety Service

614-292-3322

ps.osu.edu/sss/escort_info

Don't Forget These Tips!

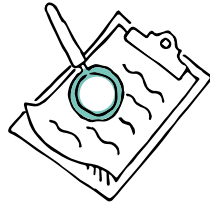
01

UTILIZE Off-Campus and Commuter Student Services.

02

HAVE YOUR FINANCES IN ORDER
Schedule a Scarlet and Gray Financial Coaching session
swc.osu.edu

03



Allow Student Legal Services to provide you with a free **LEASE REVIEW.**
studentlegal.osu.edu

04



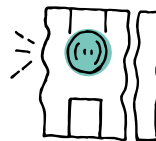
DOCUMENT EVERYTHING in writing and keep a copy for your records.

05



Schedule a **FREE HOME-WALK THROUGH** to allow Student Life and the Columbus Division of Fire to assess the safety, security and sustainability of your off-campus property.

06



Pick up your **FREE WINDOW AND DOOR ALARMS** and free safety timers from Off-Campus and Commuter Student Services.

07



TAKE RESPONSIBILITY for your own safety. Get involved with Buckeye Block Watch and the Community Ambassador/Commuter Liaison programs.

08



GET INVOLVED IN YOUR NEIGHBORHOOD.
Build positive relationships with all of your neighbors.

09



Lead a healthy, **WELL-BALANCED** lifestyle.

10



PARTY SMART, BE RESPECTFUL AND REPRESENT
The Ohio State University's motto by being a Buckeye in and out of the classroom.

OSU STUDENTS SAVE BIG WITH GATEWAY SELF STORAGE!



614-364-4385
WWW.GATEWAYSTOR.COM

- Prepay 4 Months and Save*
- Get a Free Lock
- 24 Hour Security- Digital Recording
- Fully Fenced and Gated
- Professional, Friendly Staff
- Online Bill Payments
- Climate/Non-Climate Controlled Units

**\$25 Admin Fee Waived for Prepaid Rentals*



750 E. 11th Ave
Columbus, OH 43211

WE ARE 1.1 MILES FROM
N. HIGH ST ON E. 11TH AVE



Rent your Penske truck at Gateway Self Storage

Penske is the smart choice for students:

- No underage surcharge for 18-23 year olds
- Free unlimited miles on one-way rentals
- One of the newest fleets on the road
- MP3 jack and/or CD player in every truck

Visit **PenskeU.com** or call
1-800-281-9084

to learn more about renting Penske trucks, get helpful moving tips or even start a job search at Penske.



**BRAND
NEW!**

T·H·E G R I F F
LIVE. LEARN. PLAY.



**OFFERING 1 - 4 BEDROOM
FURNISHED SUITES!**

#1

**Thanks for
voting us
Best off
Campus
Housing!**

AMENITIES & PERKS

PARKING GARAGE • 24 HOUR COMPUTER LABS & STUDY AREAS • MOVIE THEATER • ROOFTOP TERRACE • DJ BOOTH • POOL WITH OUTDOOR KITCHENS • SAND VOLLEYBALL • 24 HOUR FITNESS CENTER/TRX • PRIVATE BATH & CLOSET FOR EVERY BEDROOM • FULLY FURNISHED INCLUDING WASHER & DRYER • INDIVIDUAL FINANCIAL OBLIGATION • WATER, INTERNET & CABLE INCLUDED • CLOSE TO CABS & COTA ROUTES

thegriffosu.com



1234 Steelwood Dr.



STUDENT LEGAL SERVICES

20 E. 11th Ave
studentlegal@osu.edu

studentlegal.osu.edu

614.247.5853

- CRIMINAL MISDEMEANORS
- traffic citations
- lease reviews
- OFF-CAMPUS HOUSING
- consumer transactions
- CREDIT AND DEBT ISSUES
- contract review & drafting
- wills & power of attorney
- NOTARY & MUCH MORE



STUDENT LEGAL SERVICES

An Apartment for Virtually
EVERY Taste, **EVERY** Need,
EVERY Lifestyle.



BUCKEYE
REAL ESTATE

Creating Real Value Since 1974.

48 East 15th Avenue

614-294-5511

buckeyerealestate.com

Flats • Townhomes • Half Doubles • Houses